



# PARK AVE PLAZA



### For Lease:

4007 Park Avenue  
Union City, NJ 07087

### Available Space:

Total of 17,000 SF Available:

- Space is Divisible

Possession: Immediate

Rent: Negotiable

CAM: NNN

### Property Details:

- The property is located on Park Avenue, across from the Pathmark Center.
- Potential for four retail storefronts ranging in size from 700 SF up to 10,000 SF.
- Potential for two 4,500 SF warehouse spaces with 2 overhead doors
- Current indoor parking for up to 40 Vehicles



### Contact Information:

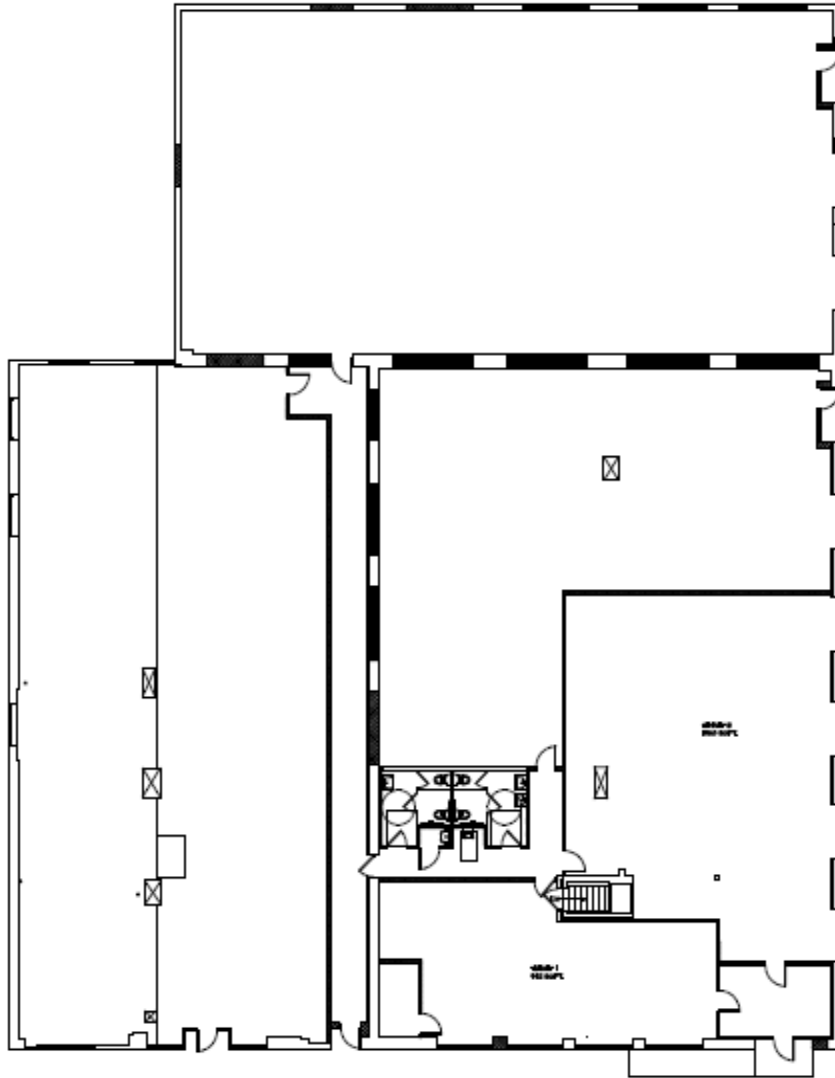
**VANICK PROPERTIES INC**  
381 Broadway, 2<sup>nd</sup> Floor  
Westwood, NJ 07675  
T: (201) 666-7710  
F: (201) 666-7714

Contact: Nicholas J. Aynilian  
[nick@vanickproperties.com](mailto:nick@vanickproperties.com)



# PARK AVENUE PLAZA

4007 PARK AVENUE, UNION CITY, NJ 07087



**17,000 SF AVAILABLE**

**Union City is the most densely populated city in the U.S.**

Population:	80,589
Housing Units:	23,741
Median Household Income:	30,642
Density (per sq mile)	52,977

Union City is located in Hudson County.

